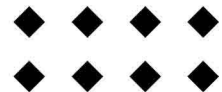
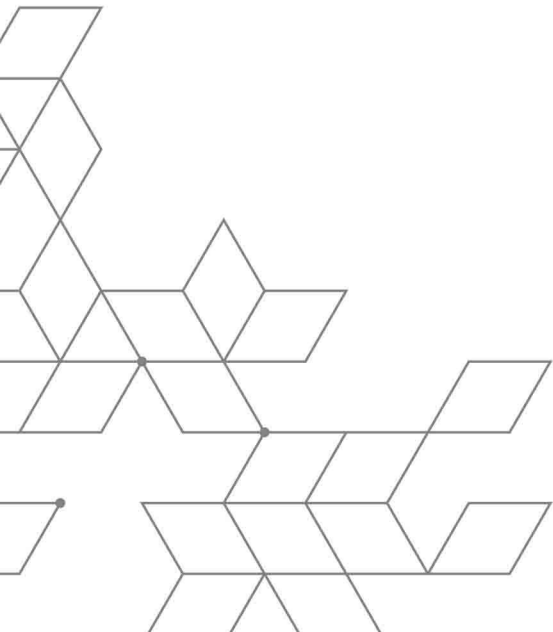


O.

COMPANY PROFILE

Rekayasa Duta Utama

Engineering, Procurement, Construction





O.

Your Construction Partners





/ About

PT. Rekayasa Duta Utama

PT. Rekayasa Duta Utama is a Company Providing Engineering, Procurement, Construction and Fabrication services.

Based on the trust of professional services towards the needs of construction development on national projects.

PT. Rekayasa Duta Utama serves projects for more than 3 years and always strives to provide the best solution in carrying out work according to the agreed contract. With proven experience we are proud to provide the best solutions and services to achieve your project goals.

The quality of human resources is the key to the reliability of our services. We provide full service with professional human resources in their fields and with quality that we always maintain.

We work with Philosophy : Trust, honesty, and communicative in the work culture of Professionalism, Integrity, Continuous Improvement, and Customer Orientation in achieving mutualism cooperation relationships.

/ Business



Our business philosophy was born from the understanding and hope to be the best in the eyes of humans and God. Reflects the values that our company apply and the company culture.



Trust

We see that trust is one of the foundations of business, we are obliged and will always fulfill every work agreement

Communicative

Communication is key to creating mutual understanding, us and our partners. That is why we always deliver services in clear language and in line with professional ethics.

Honesty

Actual facts in business processes are the basis for subsequent processes. We have to convey data, information, analysis results and actual work results.

Expediency

Every service must provide benefits to service to service users without ignoring the surrounding environment.

/ Vision

To become a quality and trusted general contractor and general supplier company that ensures service user satisfaction, employee welfare and profits for shareholders based on benefits for the surrounding environment.

/ Mission

- Ensuring client satisfaction
- Continuous service improvement efforts
- Straightforward and clear in providing service
- On time in the works
- Informatif
- Comply with client requirements & laws and regulations
- Planned education to improve employee competence





/ Human Resources



Our team has a high commitment to meeting project needs with the expertise they have. We have human resources from various disciplines to maximize the quality that we deliver to clients.

We believe we can meet our partners expectations now and in the future. Rekayasa Duta Utama always tries to maintain the quality of resources man. By creating a company environment that allows our team to continuously learn and grow.

Completing work quickly and with solutions is a shared commitment.

/ Management

As a professional institution, PT. Rekayasa Duta Utama run by people who have vision and high professionalism to answer challenges in this industry. Apart from being filled with reliable human resources, PT. Rekayasa Duta Utama is also supported by a good system.



/ Manager

Commissioner

Syamsyul Anwar, S.Kom, MM

Director

Nur Ari Rizkian, S.T

/ Legality

Alamat Kantor

Redutama Building, Greenville Residence
Jl. Cagar Alam Selatan
RT. 04 / RW 08 No. A 09
Ratu Jaya, Cipayung, Depok 16439

Telp : 021 38750027
Email : rekayasadutautama@gmail.com
marketing@redutama.com
Website : www.redutama.com

Akte Pendirian

Notaris : Sri Widyawati, S.H
Nomor : 13
Tanggal : 22 November 2019
Pengesahan : Keputusan Menteri Hukum dan Hak
Asasi Manusia
No. AHU-06239.AH.01.01.TH.2019

Surat Keterangan Domisili Perusahaan

Nomor : L4-03A/RDU/ILP-Pcr/XI-2019
Tanggal : 25 November 2019

Tanda Daftar Perusahaan (TDP)

Nomor : 9120214172752
Tanggal : 25 November 2019

SBU Jasa Kontruksi

Nomor : 912021417275200000004
Tanggal : 05 Juni 2023

Keanggotaan Dalam Organisasi

Profesi Badan Usaha

Asosiasi : Gapeksindo
Nomor : 31.3174-00826-2023

Izin Usaha Jasa Kontruksi (IUJK)

Nomor : 9120214172752
Tanggal : 10 Februari 2020

Perpajakan

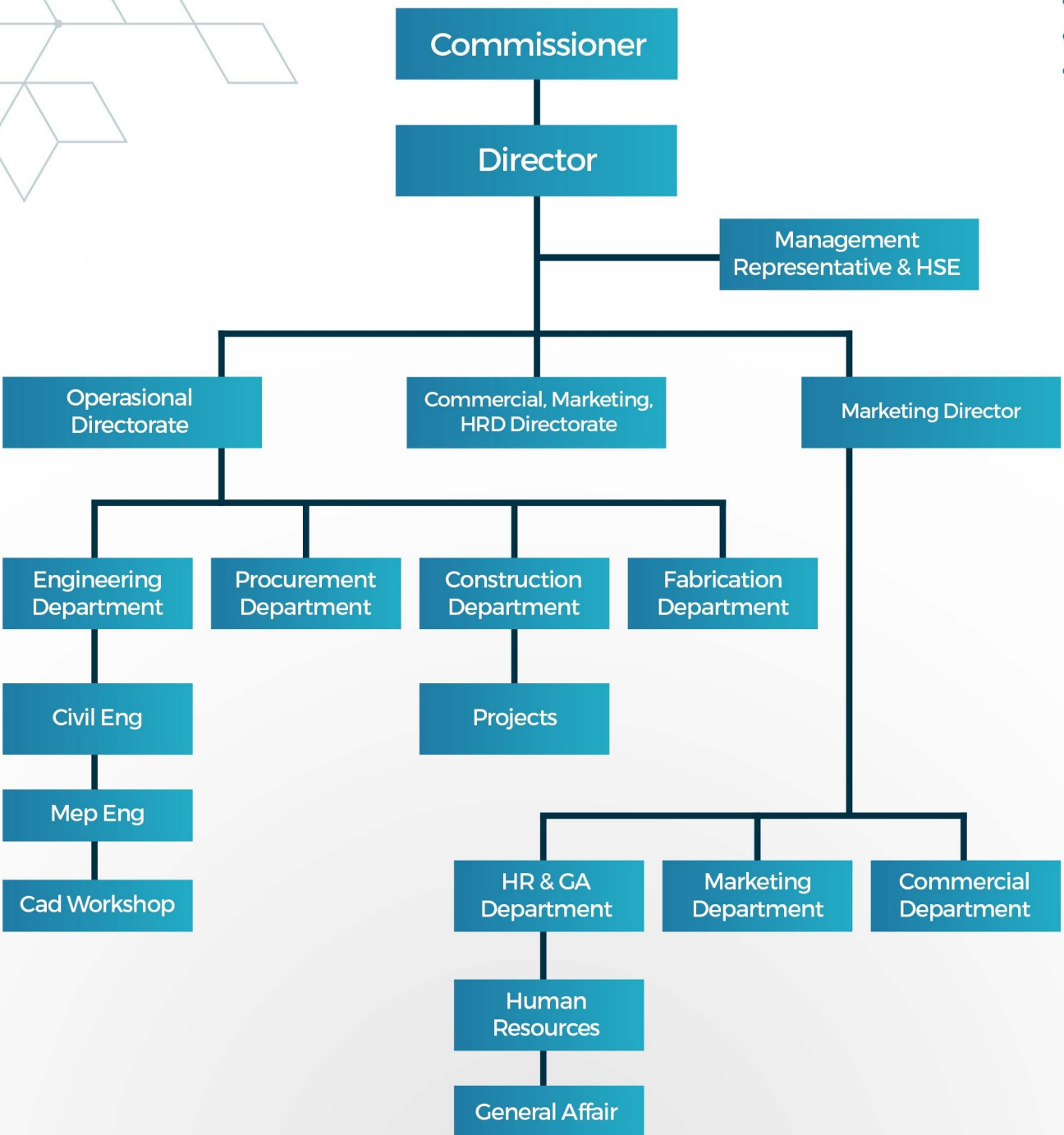
SPPKP : S-56PKP/WPJ.04/KP.0803/2020
SKT : S-14082KT/WPJ.04/KP.0803/2019
NPWP : 93.548.226.5-061.000

Bank

Bank BCA - Kcp Nusantara Depok
A/C 715 138 8888
A/N PT Rekayasa Duta Utama



/ Organizational Structure





/ Service

Rekayasa Duta Utama provides services to partners with the best solutions and services. The following are the service areas and services of Rekayasa Duta Utama.

Services Area :

- Steel Building Construction
- Concrete Building Construction
- Residential Building Construction
- Land Development
- Water Building Construction
- Fabrication and Erection of Steel Structures
- Fabrication Aluminum and Glass
- Feasibility Study
- Assessment
- Topographic Mapping
- Soil Test
- Engineering Design
- Supervision

SERTIFIKASI :
PERINDO - LPJK - IUJK

/ Special Services

For Structural Investigations and Field Inverstigations



REBAR DETECTOR / COVERMETER TEST

Identify the thickness of the concrete cover, the distance between reinforcement and the diameter of the reinforcement.



THICKNESS TEST

Find out the thickness of the steel



CORROTION / HALF POTENTIAL TEST

To determine the level of reinforcement corrosion in concrete.



TORQUE TEST

To obtain the torque of the connected components.

/ Special Services

For Structural Investigations and Field Investigations



ULTRASONIC PULSE VELOCITY TEST (UPVT)

To determine the integrity of the concrete, the quality of the concrete and the depth of concrete cracks.



HAMMER TEST

To estimate the compressive strength value of installed concrete which is targeted at the surface hardness of the concrete on structural components.



TOPOGRAPHIC SURVEY

The topography test aims to obtain the elevation/contour of the land surface in order to describe topographic maps and situation maps.

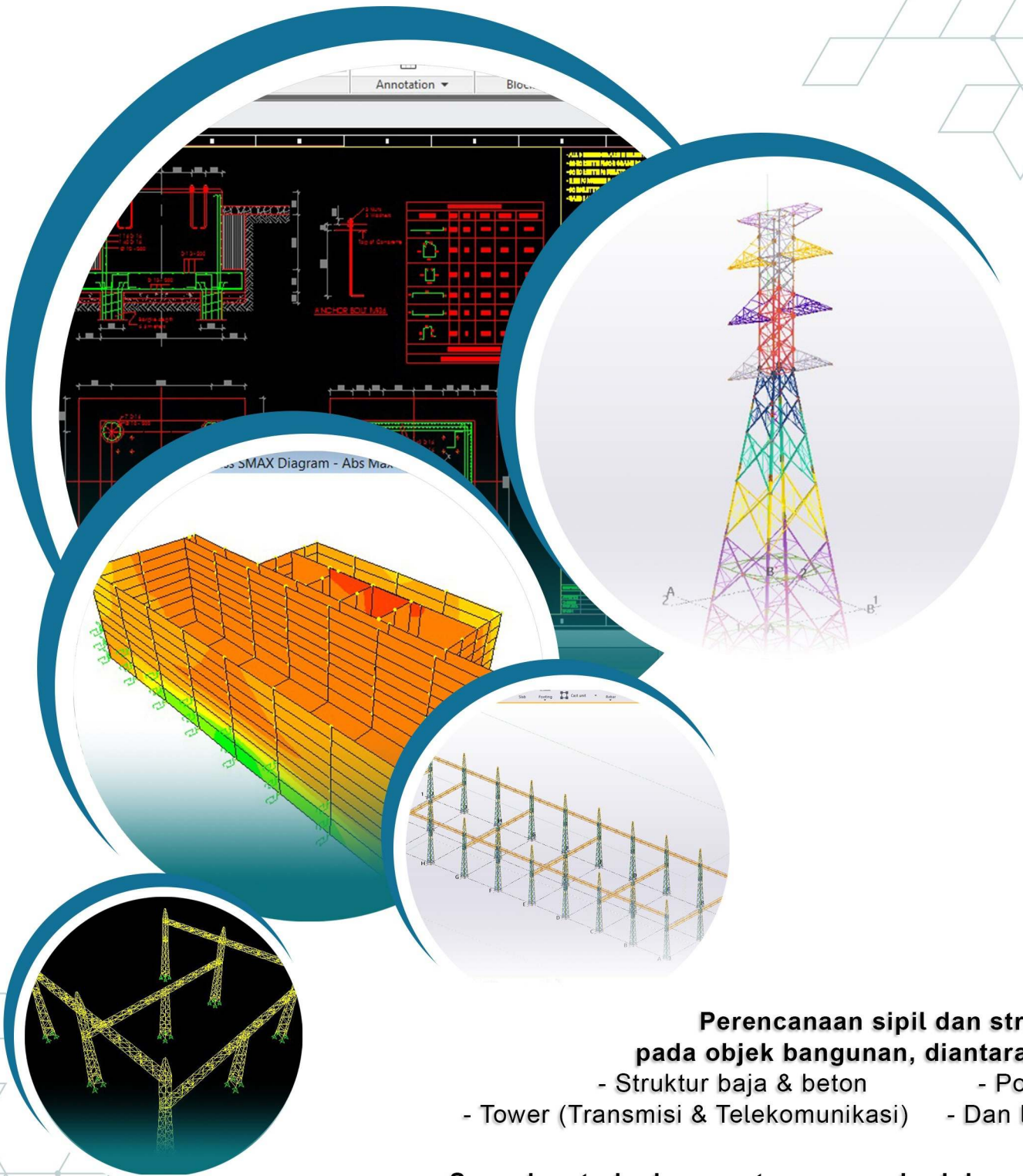


SOIL INVESTIGATION

The topography test aims to obtain the elevation/contour of the land surface in order to describe topographic maps and situation maps.



/ Engineering Design



Perencanaan sipil dan struktur pada objek bangunan, diantaranya :

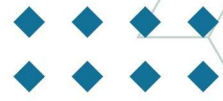
- Struktur baja & beton
- Pondasi
- Tower (Transmisi & Telekomunikasi)
- Dan lainnya

Sesuai metode dan peraturan yang berlaku, yaitu :

- SNI / *Standar Nasional Indonesia*
- ACI / *American Concrete Institute*
- AISC / *American Institute of Steel Construction*
- ASCE / *American Society of Civil Engineers*
- API / *American Petroleum Institute*
- TIA / *EIA*
- SPLN / *Standard PLN Indonesia*
- Dan lainnya

/ Experience

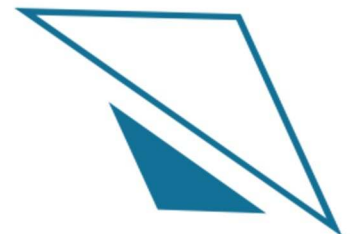
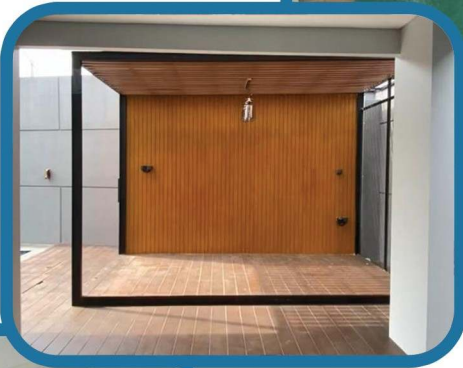
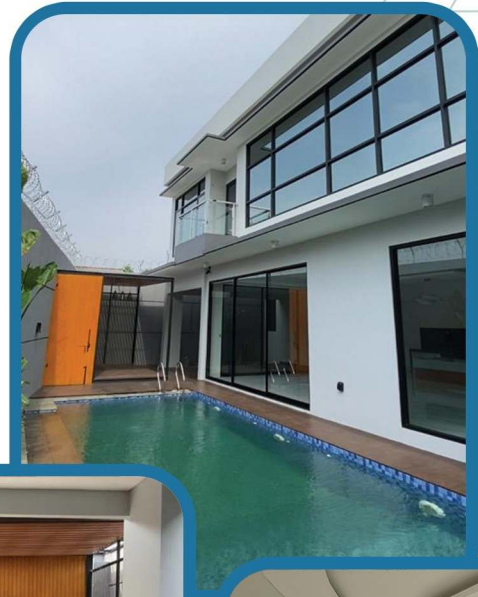
Residential Construction



Grand Depok City



Cimanggis

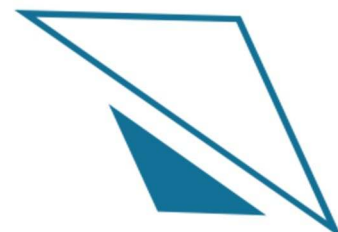


Land Development

Land Development 7HA PLTS HM Sampoerna Plant Sukerejo

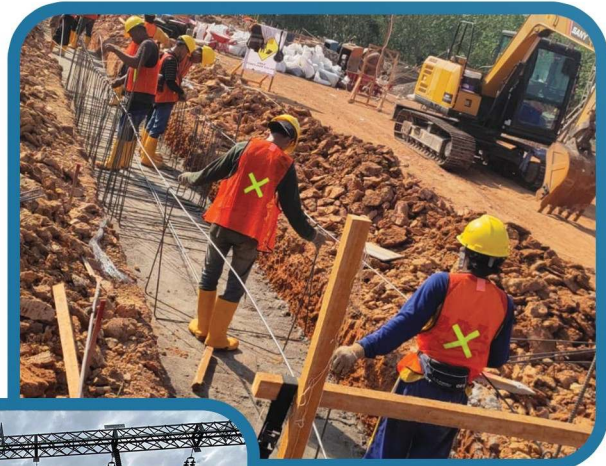


GRP Pipe Line & HDPE Pipe Installations



Construction of Main Substations

Gitet 275kV Betung Extention, Palembang



/ Survey and Testing



Pengujian Ketebalan

Steel Pole Transmission Tower 500kV



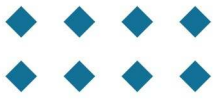
Assessment Structure Transmission Tower



Substation

150kV Control Building Works

Sofifi and Tobelo, North Maluku



9 Agu 2024 08:09
Garajo
Oba Utara
Kota Tidore Kepulauan
Maluku Utara
PT. REDUTAMA - GI. SOFI
Pekerjaan Finishing pengecatan gedung 150kV
MP. 2



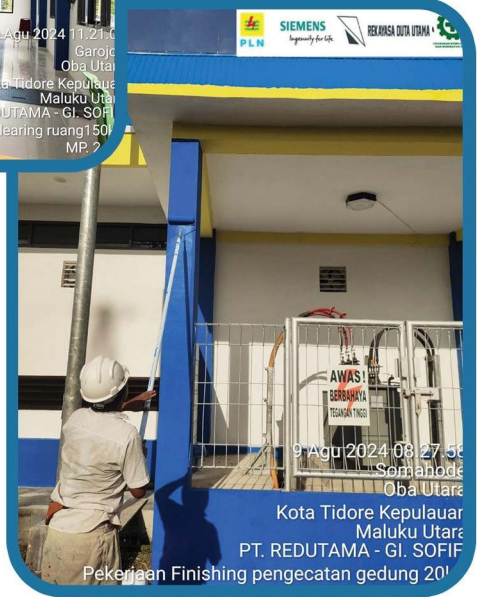
9 Agu 2024 08:26
Garajo
Oba Utara
Kota Tidore Kepulauan
Maluku Utara
PT. REDUTAMA - GI. SOFI
Pekerjaan Finishing pengecatan gedung 150kV
MP. 2



10 Agu 2024 11:21
Garajo
Oba Utara
Kota Tidore Kepulauan
Maluku Utara
PT. REDUTAMA - GI. SOFI
Pekerjaan Site clearing ruang 150kV
MP. 2



9 Agu 2024 08:11
Somahode
Oba Utara
Kota Tidore Kepulauan
Maluku Utara
PT. REDUTAMA - GI. SOFI
Pekerjaan Finishing pengecatan gedung 150kV
MP. 2



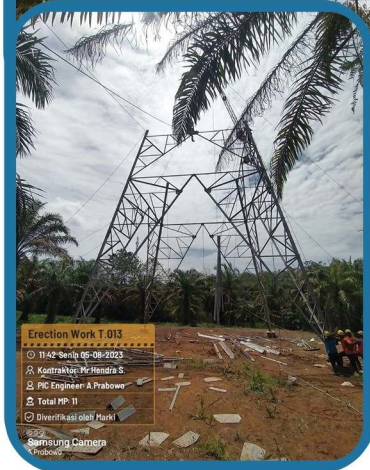
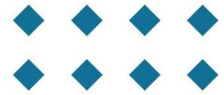
9 Agu 2024 08:27
Somahode
Oba Utara
Kota Tidore Kepulauan
Maluku Utara
PT. REDUTAMA - GI. SOFI
Pekerjaan Finishing pengecatan gedung 20kV



Transmission Tower

275 kV Erection Tower Works

South Sumatra



Transmission Tower

275 kV Foundation Works

Betung, South Sumatra



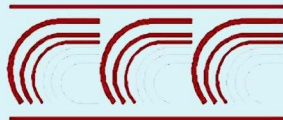
/ List of Clients



PT. Handa Teknologi Indonesia



PT. Karya Tani Semesta



PT. TRITECH CONSULT

PT. Trittech Consult Indonesia



PT. Yuditha Nugraha Karya

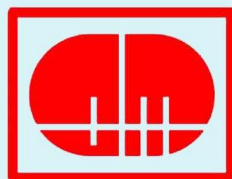


PLN

PLN Indonesia



PT. Rekadaya Elekrika



PT. Christi Manunggal



JASA RAHARJA

Jasa Raharja



Siemens Indonesia



PT. DUM



PT. Perfect Circle Engineering (PERCIE)



PT. CITRAMASJAYA TEKNIKMANDIRI

PT. Citramasjaya Teknikmandiri



PT. Dewata Makmur Bersama



PT. Bambu Balakosa Energi

/ List of Client



by Telkom Indonesia

PT. DMT



PT. Telkominfra



PT. Emits



PT. Bali Tower



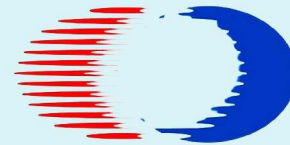
PT. Kop indosat



PT. Centratama



PT. Magnus Power



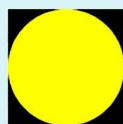
PT. Prima Artha Utama



PT. Sejahtera Mulia Kencana



PT. Trisindo



SURYA UTAMA PUTRA

PT. Surya Utama Putra



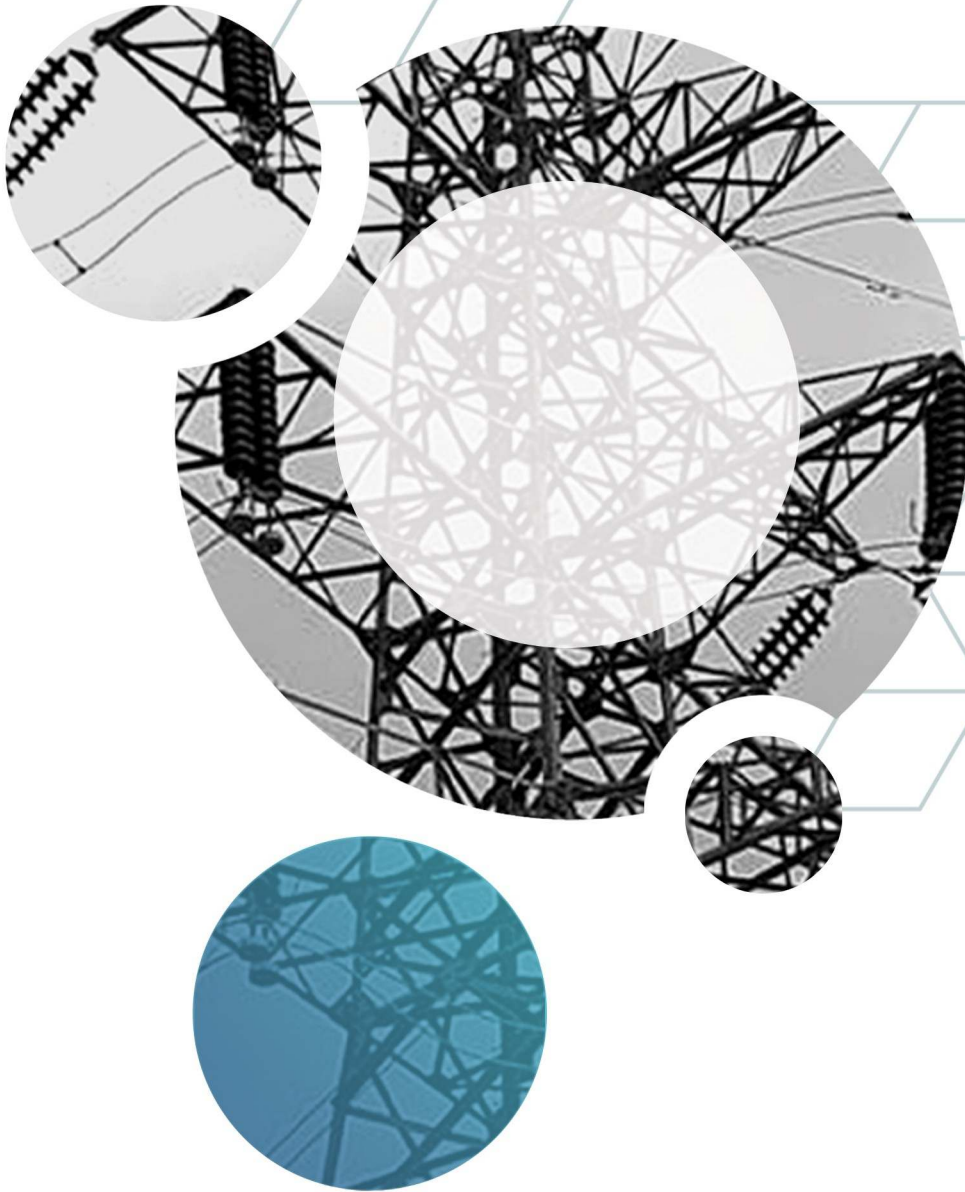
PT. Wifgas



PT. Tridayatama Power Solusindo

PT. CHOKO ABADI KONTRAKTOR

PT. Choko Abadi Kontraktor



PT. Rekayasa Duta Utama

**Redutama Building, Greenville Residence
Jl. Cagar Alam Selatan RT. 04 / RW 08 No. A 09
Ratu Jaya, Cipayung, Depok 16439**

P : 021 38750027

**E : rekayasadutautama@gmail.com
marketing@redutama.com**

W : www.redutama.com

